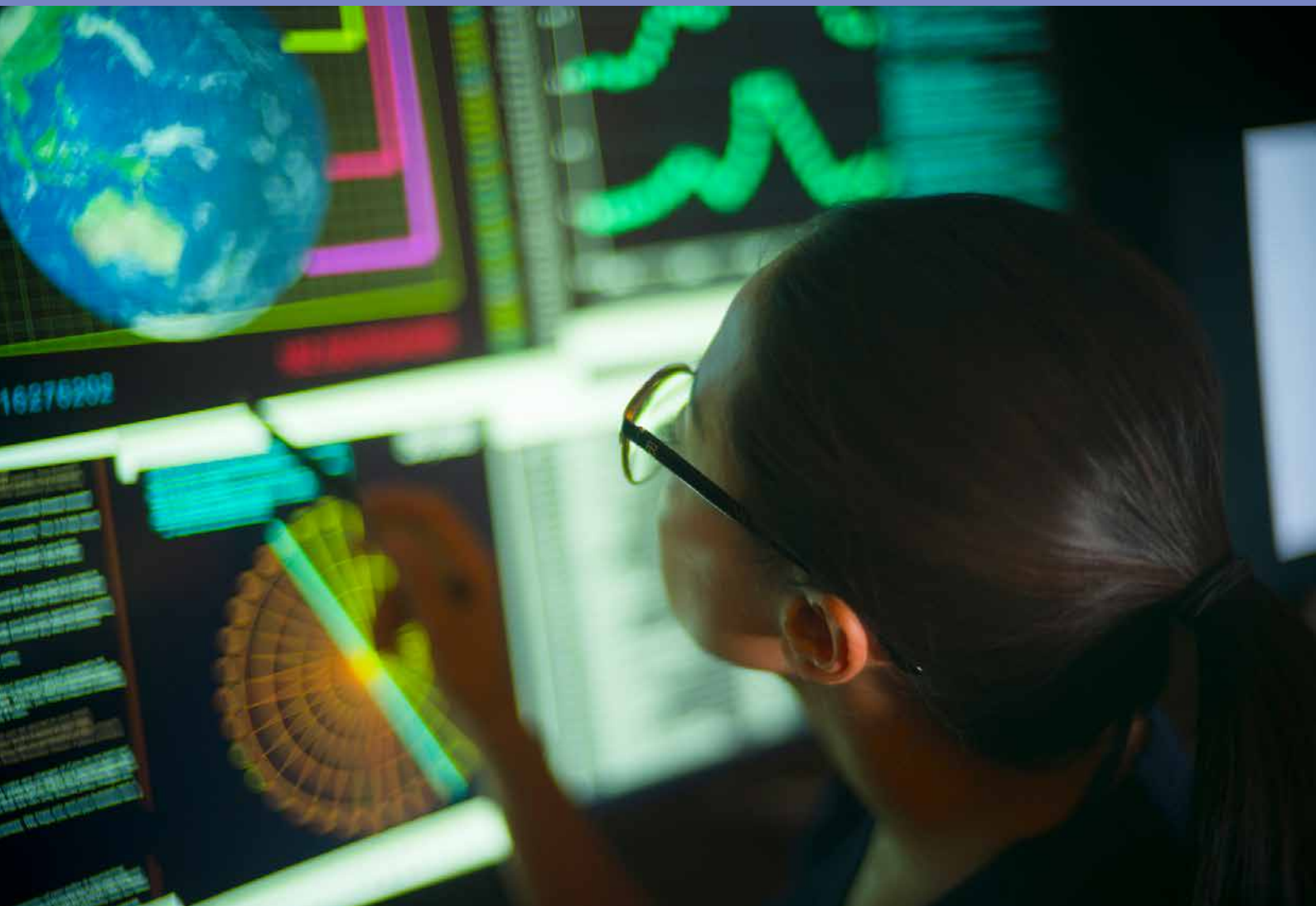


Data for investor action on modern slavery

Catalogue of resources

June 2021

Authors: Florian Ostmann, Alex Harris (The Alan Turing Institute), Nyasha Weinberg,
Irene Pietropaoli, Lise Smit (Bingham Centre for the Rule of Law)



Research by

The research report *Data for Investor Action on Modern Slavery: A Landscape Analysis*, by Florian Ostmann, Alex Harris (The Alan Turing Institute), Nyasha Weinberg, Irene Pietropaoli, Lise Smit (Bingham Centre for the Rule of Law) identified several types of data that are potentially relevant for investors looking to take action on modern slavery.

This document is a catalogue of existing resources related to these types of data identified by the research. It also sets out an overview of stakeholder initiatives with relevance to corporate conduct in relation to modern slavery. All weblinks contained in this document are correct as of June 2021. The full research report can be found at modernslaverypec.org/resources/investors-data. The research was funded by the Modern Slavery and Human Rights Policy and Evidence Centre (Modern Slavery PEC). The views expressed in this report are those of the authors and not necessarily of the Modern Slavery PEC.

Catalogue of relevant resources for the types of data identified in the report

* indicates the availability of data in structured form

Category 1: Contextual information about the occurrence of modern slavery

Examples of data about known cases of modern slavery

Data published directly by individual data producers

- Antislavery Usable Past, Voices: Narratives by Survivors of Modern Slavery <https://www.antislavery.ac.uk/>
- Polaris, Annual U.S National Human Trafficking Hotline Statistics <https://polarisproject.org/2019-us-national-human-trafficking-hotline-statistics/>
- The Salvation Army, Annual Report Statistics <https://www.salvationarmy.org.uk/modern-slavery/modern-slavery-latest-reports>
- The Salvation Army, Survivors' Stories <https://www.salvationarmy.org.uk/modern-slavery/survivors-stories>
- UK Government, National Referral Mechanism Statistics* <https://www.gov.uk/government/collections/national-referral-mechanism-statistics>, <https://www.nationalcrimeagency.gov.uk/who-we-are/publications>
- UK Government, Police Recorded Crime and Outcomes* <https://www.gov.uk/government/statistics/police-recorded-crime-open-data-tables>
- Unseen UK, Modern Slavery Helpline statistics <https://www.modernslaveryhelpline.org/learn-more/stats>

	<p>Indirect or pooled access to relevant data</p> <ul style="list-style-type: none"> • International Organization for Migration (IOM), Migration Data Portal* https://migrationdataportal.org/ • Liberty Shared, Human Trafficking Dashboard* https://libertyshared.org/idc-center • Liberty Shared, Victim Case Management System* https://www.vcms.app • Office for National Statistics, Modern Slavery in the UK* https://www.ons.gov.uk/releases/developinganapproachtomeasuremodernslaveryintheuk • The Counter Trafficking Data Collaborative, Global Dataset* https://www.ctdatacollaborative.org/ • Traffik Analysis Hub* https://www.traffikanalysis.org • UK Government, Annual Report on Modern Slavery https://assets.publishing.service.gov.uk/government/uploads/system/uploads/attachment_data/file/927111/FINAL_-_2020_Modern_Slavery_Report_14-10-20.pdf • WhatDoTheyKnow (UK freedom of information requests) https://www.whatdotheyknow.com
<p>Examples of systematic estimates</p>	<ul style="list-style-type: none"> • Alliance 8.7, Ending Child Labour, Forced Labour and Human Trafficking in Global Supply Chains https://mneguidelines.oecd.org/Ending-child-labour-forced-labour-and-human-trafficking-in-global-supply-chains.pdf • International Labour Organisation (ILO), Global Estimates of Modern Slavery: Forced Labour and Forced Marriage https://www.ilo.org/global/publications/books/WCMS_575479/lang--en/index.htm • Walk Free, Global Slavery Index* https://www.globalslaveryindex.org
<p>Examples of broader issue-focused publications</p>	<p>Specific publications</p> <p>Commodity and industry focus:</p> <ul style="list-style-type: none"> • CSR Risk Check https://www.mvorisicochecker.nl/en • Finance Against Slavery & Trafficking, Connection Diagnostic and Risk Mapping https://www.fastinitiative.org/risk-mapping/ • International Finance Corporation (IFC), Global Map of Environmental & Social Risks in Agro-Commodity Production (GMAP) https://gmaptool.org • Mekong Club, Modern Slavery Risk Map https://themekongclub.org/our-tools/ • Responsible Sourcing Tool https://www.responsiblesourcingtool.org/visualizerisk • US Department of Labor (Bureau of International Labor Affairs), various publications and apps (incl. List of Goods Produced by Child Labor or Forced Labour*) https://www.dol.gov/agencies/ilab/our-work/child-forced-labor-trafficking • Verité Commodity Atlas https://www.verite.org/commodity-atlas/

Country focus:

- Danish Institute for Human Rights (DIHR), Human Rights and Business Country Guides
<https://globalnaps.org/human-rights-and-business-country-guides/>
- Delta 8.7, Data Dashboards*
<https://delta87.org/dashboards-landing/data-dashboards/>
- Walk Free, Measurement, Action, Freedom: An Independent Assessment of Government Progress Towards Achieving UN Sustainable Development Goal 8.7 https://cdn.globalslaveryindex.org/2019-content/uploads/2019/07/17123602/walk.free..MAF_190717_FNL_DIGITAL-P.pdf
- Responsible Sourcing Tool <https://www.responsiblesourcingtool.org/>
- US Department of Labor (Bureau of International Labor Affairs), various publications and apps (incl. List of Goods Produced by Child Labor or Forced Labour*) <https://www.dol.gov/agencies/ilab/our-work/child-forced-labor-trafficking>

Mixed focus:

- Business & Human Rights Resource Centre, Digital Platform*
<https://www.business-humanrights.org>
- Delta 8.7, Thematic Overviews
<https://delta87.org/resources/thematic-overviews/>
- Freedom Collaborative, Mapping Victim Journeys
<https://freedomcollaborative.org/victim-journey-data/>
- Know the Chain, Resources <https://knowthechain.org/resources>
- United Nations Office on Drugs and Crime (UNODC), Human Trafficking and Migrant Smuggling publications
<https://www.unodc.org/unodc/en/human-trafficking/publications.html>

Thematic publication catalogues

- Anti-Slavery International, Resources on Modern Slavery
<https://www.antislavery.org/reports-and-resources/>
- Independent Anti-Slavery Commissioner's Office (UK), Resources
<https://www.antislaverycommissioner.co.uk/resources/>
- United Nations Office on Drugs and Crime (UNODC), Human Trafficking Knowledge Portal <https://sherloc.unodc.org/cld/v3/htms/>
- Walk Free, Business & Investor Toolkit
<https://www.walkfree.org/projects/business-and-investor-toolkit/>

Category 2: Contextual information about societal expectations	
Examples of resources dedicated to tracking relevant laws and regulations	<ul style="list-style-type: none"> • Antislavery in Domestic Legislation https://antislaverylaw.ac.uk • International Labour Organisation (ILO), Employment Protection Legislation Database (EPLex) https://eplex.ilo.org • Labour Exploitation Accountability Hub https://accountabilityhub.org • United Nations Office on Drugs and Crime (UNODC), Human Trafficking Knowledge Portal, Database of Legislation and Case Law Database https://sherloc.unodc.org/cld/v3/htms/ • Wage Indicator Foundation, Labor Law Around the World https://wageindicator.org/labour-laws/labour-law-around-the-world
Examples of sources of non-legal expectations	<ul style="list-style-type: none"> • See 'overview of stakeholder initiatives'

Category 3: Company-specific information controlled by companies of interest	
Examples of data access platforms for relevant non-financial disclosures	<p>Dedicated focus on Modern Slavery Statements</p> <ul style="list-style-type: none"> • Australian Government's Online Register for Modern Slavery Statements https://modernslaveryregister.gov.au • Business & Human Rights Resource Centre, Modern Slavery Registry Archive (2015-2020)* https://www.business-humanrights.org/en/from-us/modern-slavery-statements/, Github repository maintained by The Future Society containing data scraped from the Modern Slavery Registry: https://github.com/the-future-society/modern-slavery-statements-research • UK Government, Register for Modern Slavery Statements https://modern-slavery-statement-registry.service.gov.uk <p>Broader focus (in some cases including Modern Slavery Statements)</p> <ul style="list-style-type: none"> • Bank Track https://www.banktrack.org/search#category=banks • Companies House (UK)* https://beta.companieshouse.gov.uk, https://download.companieshouse.gov.uk/en_output.html • Datamaran https://www.datamaran.com • Open Apparel Registry (facility list data from apparel brands) https://openapparel.org • OpenCorporates* https://opencorporates.com, https://api.opencorporates.com • Shift, UNGP Reporting Database https://www.ungpreporting.org/database-analysis/ • TISC Report* https://tiscreport.org • United States Securities and Exchange Commission, EDGAR filings database https://www.sec.gov/edgar/search/ • Wikirate* https://wikirate.org • Workforce Disclosure Initiative, public data* https://shareaction.org/wdi/2019-public-data/

<p>Examples of data access platforms for company registry entries and financial statements</p>	<p>Jurisdiction-specific platforms</p> <ul style="list-style-type: none"> • Companies House (UK)* https://beta.companieshouse.gov.uk • For a non-exhaustive list of government-maintained databases in other jurisdictions, see https://www.gov.uk/government/publications/overseas-registries/overseas-registries <p>Cross-jurisdictional platforms</p> <ul style="list-style-type: none"> • OpenCorporates* https://opencorporates.com • TISC Report* https://tiscreport.org
<p>Examples of providers of relevant data- and technology-driven solutions for managing supply chain risks</p>	<p>Due diligence and risk management (incl. supply chain mapping)</p> <p>Focus on modern slavery:</p> <ul style="list-style-type: none"> • Dun & Bradstreet, Human Trafficking Risk Index https://www.stgdev.dnb.co.uk/products/operations-supply/human-trafficking-risk-index-combat-forced-labor.html • Labor Safe Screen https://www.sustainability-incubator.com/servicedir/labor-safe-screen/ • Made in a Free World, FRDM https://www.frdm.co • Slavefreetrade, Libertas https://slavefreetrade.org/organisations/ • Verité, CUMULUS Forced Labor Screen https://www.verite.org/cumulus/ <p>Focus on human rights, ethically responsible sourcing, sustainability:</p> <ul style="list-style-type: none"> • Atlanta https://altana.ai • Blunumber https://www.blunumber.com/en/ • ChainPoint https://www.chainpoint.com • EcoVadis https://ecovadis.com • Enablon https://enablon.com • ethiXbase https://ethixbase.com • Greenstone+ Supply Chain Software https://www.greenstoneplus.com/about-us/supply-chain-software • Phylagen Origin (DNA) https://www.phylagen.com/solutions/phylagen-origin • RCS Global https://www.rcsglobal.com/ • Resilinc https://solutions.resilinc.com/supplier-risk-scorecard/ • Sedex Advance https://www.sedex.com • Sourcemap https://www.sourcemap.com • String3 https://getstring3.com • Supply Shift https://www.supplyshift.net • Sustainabill https://sustainabill.de • Timby https://timby.org/ • Transparency-One https://www.transparency-one.com • Verifik8 https://www.verifik8.com <p>Note: Some of the ESG data providers listed in Table 11 also offer supply chain management solutions</p>

Blockchain-based solutions

- Diginex eMin (employment contracts) <https://www.diginex-solutions.com/emin>
- Everledger (supply chain tracing) <https://www.everledger.io>
- Fishcoin (supply chain tracing) <https://fishcoin.co>
- Minespider (supply chain tracing) <https://www.minespider.com/>
- OpenSC (supply chain tracing) <https://opensc.org>
- Provenance (supply chain tracing) <https://www.provenance.org/>
- Traseable (supply chain tracing) <https://www.traseable.com>
- Wholechain (supply chain tracing) <https://wholechain.com/>

Worker voice

- &Wider <https://www.andwider.com>
- Apprise, <https://www.apprise.solutions/>
- Elevate, LaborLink
<https://www.elevatelimited.com/services/consulting/worker-engagement/>
- Issara Institute, Inclusive Labor Monitoring System and Golden Dreams
<https://www.issarainstitute.org>
- Labor Solutions <https://www.laborsolutions.tech>
- MicroBenefits, ComapnyIQ <https://www.microbenefits.com>
- Quizrr <https://www.quizrr.se>
- Slavefreetrade, Libertas <https://slavefreetrade.org/organisations/>
- Ulula <https://ulula.com>
- Work Ahead <https://www.workahead.co>
- Worker Connect <https://www.workerconnect.org>

Category 4: Independent company-specific information

Examples
of company
rating data

Thematically driven ratings

Assessments that include quantitative scores:

- Abolish Foundation, BuyFair App <https://www.abolishfoundation.com/buyfair/>
- Corporate Human Rights Benchmark* <https://www.corporatebenchmark.org/download-benchmark-data> (part of the World Benchmarking Alliance <https://www.worldbenchmarkingalliance.org>)
- Fashion Revolution, Fashion Transparency Index 2020* <https://www.fashionrevolution.org/about/transparency/>, structured data available via WikiRate (https://wikirate.org/Fashion_Revolution+Fashion_Transparency_Index_2020) *
- GFEMS Modern Slavery Screening Tool* (in development) <https://www.gfems.org/global-finance>
- JUST Capital Ranking* <https://justcapital.com/rankings/>
- Know the Chain Company List* <https://knowthechain.org/company-lists/>, <https://knowthechain.org/benchmark-downloads/scorecard-downloads/>
- Responsible Mining Foundation, Responsible Mining Index 2020* <https://2020.responsibleminingindex.org/en>
- Responsible Sourcing Network, Mining the Disclosures 2019 <https://www.sourcingnetwork.org/mining-the-disclosures>

Qualitative assessments:

- Business & Human Rights Resource Centre, Company Dashboards https://www.business-humanrights.org/en/companies/#company_search
- Ethical Consumer, Company Profiles <https://www.ethicalconsumer.org>
- Fair Wear Foundation, Brand Performance Check <https://www.fairwear.org/brands>
- Fashion Checker <https://fashionchecker.org>
- ICCR Shareholder Exchange <https://www.iccr.org/data-driven-engagement-strategies-powered-iccrs-shareholder-exchange>
- Remake (apparel brands)
- TISC Report* <https://tiscreport.org>
- Wikirate* <https://wikirate.org>

	<p>General ESG ratings</p> <ul style="list-style-type: none"> • Arabesque S-Ray* https://www.arabesque.com/s-ray/ • Bloomberg, ES Scores and ESG Disclosure Scores https://www.bloomberg.com/professional/solution/sustainable-finance/ • CSRHub* https://www.csrhub.com • Diginex ESG* https://www.diginex-solutions.com/diginexesg • EcoDesk* https://www.ecodesk.com • FTSE Russell, ESG Ratings* https://www.ftserussell.com/data/sustainability-and-esg-data/esg-ratings • Greenstone+ Investor ESG Software* https://www.greenstoneplus.com • MSCI ESG raw data, scores and ratings* https://www.msci.com • Refinitiv, ESG data and scores* https://www.refinitiv.com/en/financial-data/company-data/esg-data, https://www.refinitiv.com/en/sustainable-finance/esg-scores • RepRisk* https://www.reprisk.com • S&P Global ESG Solutions* https://www.spglobal.com/en/capabilities/esg-solutions • S&P Dow Jones Indices, ESG Scores* https://www.spglobal.com/spdji/en/landing/investment-themes/esg-scores/ • Sustainalytics* https://www.sustainalytics.com • Vigeo Eiris* https://vigeo-eiris.com
<p>Examples of access to data on independent audits, certification, or accreditation</p>	<ul style="list-style-type: none"> • See 'overview of stakeholder initiatives' (entries marked with ++)

Examples of access to data on company-specific campaigns, allegations, and proceedings

Data on company-specific investor activity

- As You Sow, Shareholder Resolutions Tracker* <https://www.asyousow.org/resolutions-tracker>
- Committee on Workers' Capital, News and Proxy Alerts <https://www.workerscapital.org/documents>
- Interfaith Centre on Corporate Responsibility, various resources (updates, lists of corporate engagements and shareholder resolutions, Shareholder Exchange)* <https://www.iccr.org>
- Shareholder Association for Research and Education (SHARE)*, Shareholder Proposal Search <https://share.ca/share-proposals/>

Data on company-specific controversies more broadly

- Bank Track, Dodgy Deals map https://www.banktrack.org/dodgy_deals_map
- Bloomberg, Environmental & Social News Sentiment Scores*, <https://www.bloomberg.com/professional/solution/sustainable-finance/>
- Business & Human Rights Resource Centre, Company Dashboards* <https://www.business-humanrights.org/en/blog/using-our-business-and-human-rights-data-to-bring-about-change/>
- Complaint data bases maintained by National Contact Points for the OECD Guidelines for Multinational Enterprises For the UK National Contact Point, see <https://www.gov.uk/government/collections/uk-national-contact-point-statements>
- Ethical Consumer, Company Profiles and Boycotts List <https://www.ethicalconsumer.org>, <https://www.ethicalconsumer.org/ethicalcampaigns/boycotts>
- LexisNexis, Global News Aggregation* <https://bis.lexisnexis.com/uk/news-aggregation>
- Minerals Grievance Platform* <https://mineralsgrievanceplatform.org>
- OECD Watch, OECD-wide database of complaints submitted to National Contact Points for the OECD Guidelines for Multinational Enterprises* <https://complaints.oecdwatch.org/cases>
- Refinitiv, World-Check Risk Intelligence* <https://www.refinitiv.com/en/products/world-check-kyc-screening>
- RepRisk* <https://www.reprisk.com>
- US Customs and Border Protection, Withhold Release Orders and Findings <https://www.cbp.gov/trade/programs-administration/forced-labor/withhold-release-orders-and-findings>

Examples of access to data on observable business footprints

Customs and logistics data

- Descartes Datamyne <https://www.descartes.com/solutions/global-trade-intelligence/import-export-data-trade-research>
- IHS Markit, PIERS <https://ihsmarkit.com/products/piers.html>
- Import Radar <https://importradar.com/>
- ImportGenius <https://www.importgenius.com>
- Market Inside <https://www.marketinsidedata.com>
- S&P Global, Panjiva <https://panjiva.com>

Sea vessel tracking data

- exactEarth <https://www.exactearth.com>
- FleetMon <https://www.fleetmon.com>
- Global Fishing Watch <https://globalfishingwatch.org>
- Marine Traffic <https://www.marinetraffic.com>
- MyShip Tracking <https://www.myshiptracking.com>
- UN Global Platform Market, AIS data feed (request access) <https://marketplace.officialstatistics.org/ais-data>
- VesselFinder <https://www.vesselfinder.com>
- Maxar, Digital Globe <https://www.maxar.com>
- OceanMind <https://www.oceanmind.global>

Data collaboration initiatives for financial transaction data in the context of combatting modern slavery

- Financial Transactions and Reports Analysis Centre of Canada (FINTRAC), Project PROTECT <https://www.fintrac-canafe.gc.ca/emplo/psr-eng>
- Traffik Analysis Hub <https://www.traffikanalysis.org>
- Anti-Human Trafficking Intelligence Initiative <https://followmoneyfightsslavery.org>
- The Knoble (Cross Industry Data Initiative) <https://www.theknoble.com>
- Global Fund to End Modern Slavery <https://www.gfems.org>
- Global Coalition to Fight Financial Crime <https://www.gcffc.org/about-gcffc/>

Overview of stakeholder initiatives with relevance to corporate conduct in relation to modern slavery

Key: +=includes audit/certification/accreditation scheme¹

++= includes database of certified/audited/accredited companies

Type of initiative	Thematic scope		
	Modern slavery	Labour rights / human rights	Responsible and sustainable business conduct
Investor-led	<p>Cross-sectoral:</p> <p><u>'Find It, Fix It, Prevent It' Initiative (led by CCLA)</u></p> <p><u>Investors Against Slavery and Trafficking Asia-Pacific</u></p> <p><u>Votes Against Slavery (led by Rathbones)</u></p>	<p>Cross-sectoral:</p> <p><u>Investor Alliance for Human Rights</u></p> <p><u>Workforce Disclosure Initiative (Investor Coalition)</u></p>	<p>Cross-sectoral:</p> <p><u>As You Sow</u></p> <p><u>Committee on Workers' Capital</u></p> <p><u>Interfaith Centre on Corporate Responsibility (ICCR)</u></p> <p><u>Principles for Responsible Investment</u></p> <p><u>Shareholder Association for Research and Education (SHARE)</u></p> <p><u>The Investor Forum</u></p>
Multi-stakeholder	<p>Cross-sectoral:</p> <p><u>BEST Alliance (Businesses Ending Slavery & Trafficking)</u></p> <p><u>Responsible and Ethical Private Sector Coalition against Trafficking (RESPECT)</u></p> <p><u>Stronger Together</u></p> <p>Sector-specific:</p> <p><u>Banks Alliance Against Trafficking</u></p> <p><u>Finance Against Slavery and Trafficking</u></p> <p><u>Stop Slavery Hotel Industry Network</u></p> <p><u>The Multi-stakeholders Initiative for Accountable Supply Chain of Thai Fisheries (MAST)</u></p> <p><u>Truckers Against Trafficking / Busing on the Lookout++</u></p>	<p>Cross-sectoral:</p> <p><u>Ethical Trading Initiative</u></p> <p><u>Fair Labor Association+</u></p> <p><u>Leadership Group for Responsible Recruitment</u></p> <p><u>Responsible Sourcing Network</u></p> <p><u>Social Responsibility Alliance</u></p>	<p>Cross-sectoral:</p> <p><u>Corporate Reporting Dialogue</u></p> <p><u>Fairtrade International+ and Fair Trade USA+</u></p> <p><u>Global Reporting Initiative</u></p> <p><u>International Integrated Reporting Council</u></p> <p><u>Rainforest Alliance+</u></p> <p><u>Sustainability Accounting Standards Board</u></p> <p><u>UN Global Compact</u></p> <p>Sector-specific:</p> <p><u>Alliance for Responsible Mining/ Fairmined+</u></p> <p><u>Fashion Revolution</u></p> <p><u>Initiative for Responsible Mining Assurance+</u></p> <p><u>Partnership on Sustainable Textiles</u></p> <p><u>Responsible Sourcing Network</u></p> <p><u>Roundtable on Sustainable Palm Oil++</u></p> <p><u>Seafood Alliance for Legality and Traceability (SALT)</u></p>

1. Inclusion in this table is not meant to express a judgment on the validity or soundness of individual schemes.

<p>Business-led</p>	<p>Cross-sectoral: Global Business Coalition Against Human Trafficking (GBCAT) The Mekong Club Sector-specific: IATA Eyes Open Initiative (Airline Industry) Seafood Taskforce</p>	<p>Cross-sectoral: Consumer Good Forum, Human Rights Coalition (Working to End Forced Labour) Responsible Recruitment Toolkit / Clearview certification scheme+ Sector-specific: Apparel & Footwear Industry Commitment to Responsible Recruitment Fair Wear Foundation</p>	<p>Cross-sectoral: Consumer Good Forum, Sustainable Supply Chain Initiative Responsible Business Alliance² Sector-specific: Better Cotton Initiative++ Responsible Fishing Vessel Standard Responsible Jewellery Council++ Sustainable Apparel Coalition Sustainable Hospitality Alliance</p>
<p>Civil society-led</p>	<p>Cross-sectoral: Know the Chain</p>	<p>Cross-sectoral: Corporate Human Rights Benchmark International Corporate Accountability Roundtable Social Accountability International+ Sector-specific: Clean Clothes Campaign Transparency Pledge (Apparel and Footwear)</p>	<p>Cross-sectoral: Corporate Justice Coalition Share Action Sector-specific: Responsible Mining Foundation</p>
<p>Government-led</p>	<p>Cross-sectoral: Bali Process Government & Business Forum Corporate Responsibility in Eliminating Slavery and Trafficking (CREST) ILO Global Business Network on Forced Labor</p>	<p>Cross-sectoral: Better Work Initiative++ ILO Fair Recruitment Initiative IOM International Recruitment Integrity System (IRIS) UN Guiding Principles on Business and Human Rights (including National Action Plans)</p>	<p>Cross-sectoral: OECD Guidelines for Multinational Enterprises</p>

2. Initiatives include the Responsible Labor Initiative, the Responsible Minerals Initiative, and the Responsible Factory Initiative.

MODERN SLAVERY & HUMAN RIGHTS | POLICY & EVIDENCE CENTRE

Led by the Bingham Centre

The Modern Slavery and Human Rights Policy and Evidence Centre was created by the investment of public funding to enhance understanding of modern slavery and transform the effectiveness of law and policies designed to overcome it. With high quality research at its heart, the Centre brings together academics, policymakers, businesses, civil society, survivors and the public on a scale not seen before in the UK to collaborate on solving this global challenge.

The Centre is a consortium of six academic organisations led by the Bingham Centre for the Rule of Law and is funded by the Art and Humanities Research Council on behalf of UK Research and Innovation (UKRI).

Our partners:



The Modern Slavery and Human Rights Policy and Evidence Centre is funded and actively supported by the Arts and Humanities Research Council (AHRC), part of UK Research and Innovation (UKRI), from the Strategic Priorities Fund.

Modern Slavery and Human Rights Policy and Evidence Centre
c/o British Institute of International and Comparative Law
Charles Clore House, 17 Russell Square, London, WC1B 5JP

A company limited by guarantee
Registered in England No. 615025
Registered Charity No. 209425

office@modernslaverypec.org

www.modernslaverypec.org